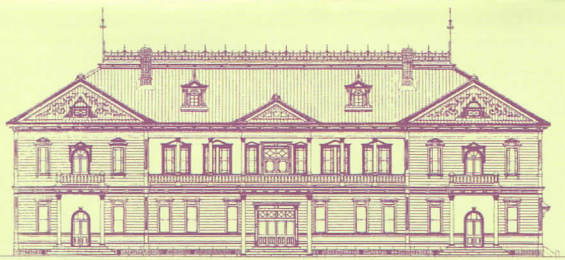


# Old Public Hall of Hakodate Ward



**● Information** Hours: 9am-7pm (April-October)  
 9am-5pm (November-March)  
 Closed: December 31-January 3  
 (May also be closed for maintenance)  
 Admission: Adults 300 yen, Students/Pupils 150 yen  
 Combination tickets are also available for admission to  
 2 facilities: Adults 500 yen, Students/Pupils 250 yen  
 3 facilities: Adults 720 yen, Students/Pupils 360 yen  
 4 facilities: Adults 840 yen, Students/Pupils 420 yen  
 \* 20-percent discount is available for groups of 20 or more, as well as a 50-percent discount  
 for Hakodate residents aged 65 and older. Discounts do not apply to combination tickets.  
 \* Admission is free for preschoolers and younger children, as well as disabled residents of  
 Hakodate.  
 Combination tickets are good for the admission to any combination of Old Public  
 Hall of Hakodate Ward, Hakodate Archive Museum of Northern Peoples, Hakodate  
 Museum of Literature and Old British Consulate.  
**Foundation for Culture and Sport Promotion in Hakodate**  
**Old Public Hall of Hakodate Ward**  
 11-13 Motomachi, Hakodate Phone (0138) 22-1001  
 Fax (0138) 22-8284  
 URL <http://www.zaidan-hakodate.com/>

Commemorative Stamp

## ● General Outline

Address: 11-13 Motomachi, Hakodate

Date of Construction: September 1910

Structure: Main building is a wooden two-story structure with a wooden roof.

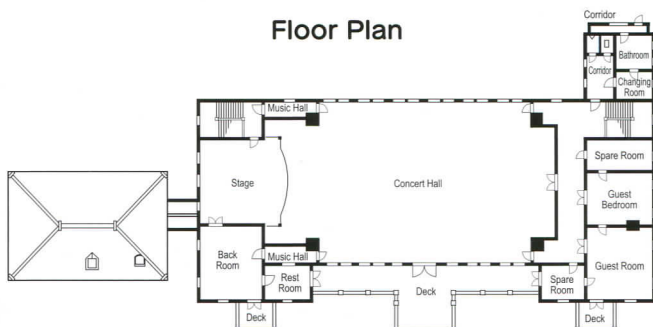
Annex is a wooden one-story structure with a wooden roof and a connecting corridor.

Total Area: 1,900.123m<sup>2</sup>

First/Second Floor incl. driveway: 1,761.308m<sup>2</sup>

Annex: 138.815m<sup>2</sup>

Floor Plan



Second Floor



First Floor



The construction of the Old Public Hall of Hakodate Ward started in May 1909 and was completed in September the following year. When, in August 1907, the Great Fire of Hakodate burnt down the town hall that had been used for the town assembly, a Council for the Building of the Assembly Hall was set up by a group of local residents. The council collected 58,000 yen from voluntary donations, of which 50,000 yen was donated by Teppei Soma, a prominent local businessman. The hall was designed by Asajiro Konishi, a ward engineer, and the construction was contracted to Jinzaburo Muraki and directed by Genkichi Shibuya, also a ward engineer.

The hall consists of a main building and an annex. The main building is of a two-story symmetrical structure with roof windows and a balcony on the upper floor. There are columns

with ornamented capitals at the main entrance, symmetrical side-entrances and a balcony. These exquisitely executed details of a unique style were highly evaluated, and the status of a national asset was conferred to the main building in May 1974 and to the annex in December 1980.

The hall had a great honor of offering accommodations for Crown Prince Yoshihito (the future Taisho Emperor) in August 1911, and for Crown Prince Hirohito (the future Showa Emperor) in July 1922 during their visits to Hokkaido. The hall had been used as a city public hall since 1957. After a three-year repair was completed in 1982, the original details were restored and the hall today serves as a concert hall popular among the residents of Hakodate.



### RECEPTION ROOM

The walls and the ceilings are covered by imported art nouveau wallpaper.



### MASTER GUEST ROOM

The brass-piped bed being highly valued in those days, it appears in the photo albums of the Crown Princely trips. Chair seats are covered with premium woven silk.



### CONCERT HALL

The wall has the plaster finishing with the wood wainscot panels. The upper part of the door to the balcony is framed with fluted glass to let in light.

### CENTER ORNAMENT AND CHANDELIER

The center ornaments are for both coved and flat ceilings: the U-shaped chandelier is used for the Guest Room and the S-shaped chandeliers for the Main Hall and other rooms.



The style is quasi-Renaissance but not of authentic kind. The structural symmetry and the carving of the ornamented capitals may convey hints of the Western style.



Capitals on the second-floor balcony



### Haikara Costume Gallery

Will help you time-slip to the Meiji period!

Why not create a sweet memory of your trip by taking pictures right here in the fancy classical attires?



Dress Rental Rates:  
1000yen/20min.incl.tax  
Hours: 9am-5pm  
(Closed for winter.)